

Year 9 Art Homework

Perspective

Please complete work on cartridge paper, plain paper or in an art sketchbook if you have one.

Choose 1, 2 or all 3 of the tasks below. Each task should take approximately 1 hour to complete well.

1. Post Impressionism

Working independently...

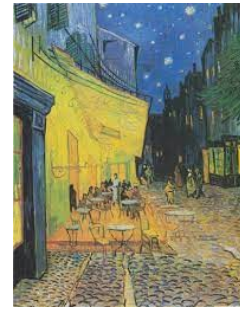
Post-impressionism is a term which describes the changes in impressionism from about 1886, the date of the last Impressionist group show in Paris. The term is usually confined to the four major figures who developed and extended impressionism in distinctly different directions – Paul Cezanne, Paul Gauguin, Georges Seurat and Vincent van Gogh.

Produce your own Post Impressionism piece of art showing perspective.

Using paint or pencil crayons create a room within your home showing perspective in the style of Van Gogh.



Vincent Van Gogh
Bedroom in Arles
1888



Vincent Van Gogh
Café terrace at night
1888

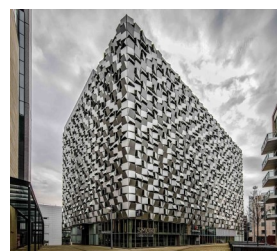
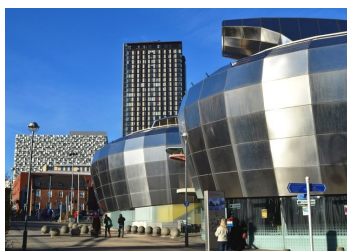
2. Explore your creative side

Working with your family...

Throughout his long and prolific career Frank Lloyd Wright brought American architecture to the forefront. His visionary celebrations were strongly influenced by the natural world, and he emphasized craftsmanship while embracing technology's ability to make design accessible to all. Wright was also highly involved with the interiors of his buildings, creating furnishings and other custom elements such as stained-glass windows to enhance the overall design.



Explore the city of Sheffield and take photographs of buildings that have an interesting design like Frank Lloyd Wright. Below are 2 examples of buildings from Sheffield. Go and explore and see how many you can find.



Please email your photographs to your class teacher.

3. Delve into research

Working using technology...

Perspective is a drawing or painting technique. It gives an image on a flat surface a sense of depth. Artists use this tool to make their imagery look more realistic and accurate as we see it in real life. Perspective creates the illusion of depth and distance on an otherwise flat surface.

Research into the history of perspective and how artists have developed this in their own artwork. What are the rules of perspective?

You could include images printed from the Tate website or other websites or include your own artwork to explain your findings.

When completing your homework please consider everything you have learnt so far in Art ensuring that you produce work to the highest of your ability where possible.

If you have any questions about the tasks set or you are submitting your photographs or research digitally please email your class teacher.

Ms Wardle (Subject lead): swardle@forgevalley.sheffield.sch.uk

Mrs Bird: lbird@forgevalley.sheffield.sch.uk

Ms Savage: asavage@forgevalley.sheffield.sch.uk